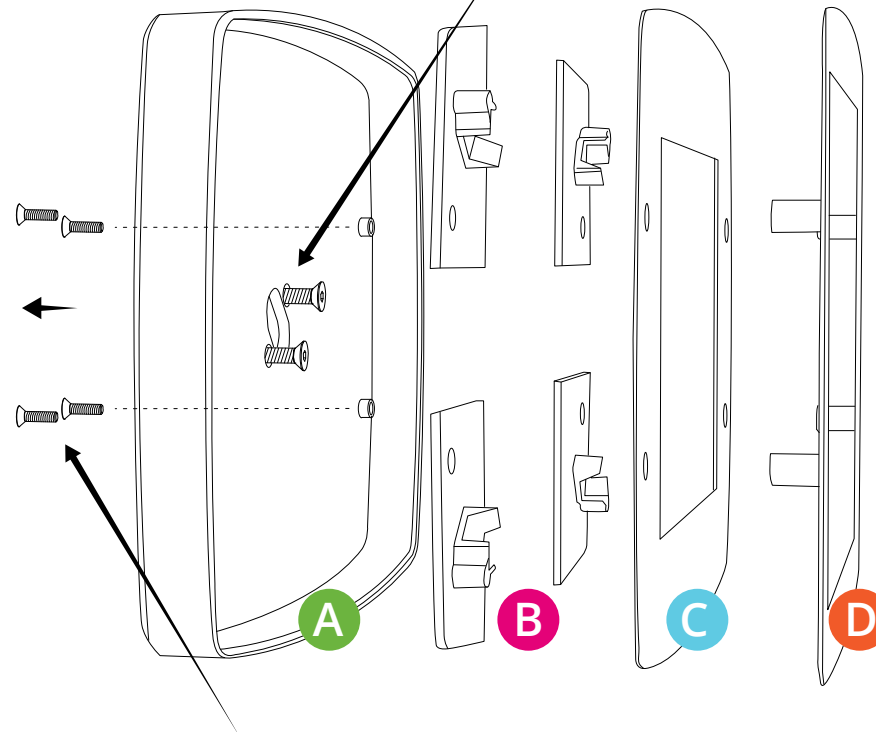
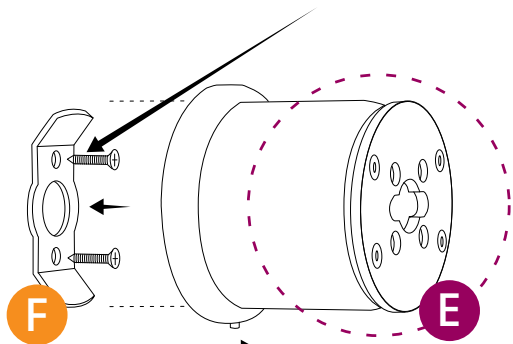
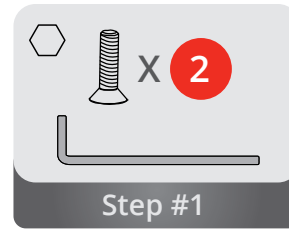


ARMOILO™

Wall Tablet Mount



Caution: Remove enclosure from wall before removing tablet.

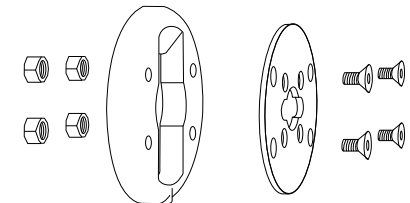
Wall Assembly

- 01 Connect **A** to **E** in either landscape or portrait orientation using two screws
- 02 Insert 4 x **B** into **A**
- 03 Insert your tablet
- 04 Cover Tablet with **C**
Remove protective plastic on first use
- 05 Cover **C** with **D**
- 06 Secure **D** by putting 4 security screws in through the back of **A**
- 07 Fasten **F** to the wall using appropriate bolts or screws*
- 08 Hang complete assembly **A** + **E** onto **F**
- 09 Tighten set screw at the base of **E** to secure Wall Mount to the bracket

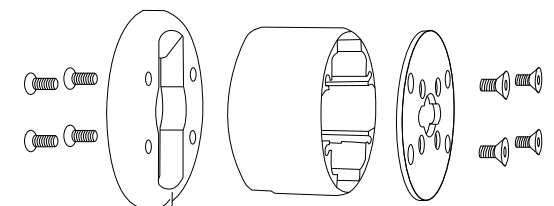
WARNING: * Ensure that the wall mount bracket **F** is mounted to a sturdy anchor point such as a stud. Mounting the bracket to drywall is **not recommended**.

E Optional Setup

Ultra low-profile



Low-profile (as shipped)



For full Assembly Instructions and Warranty Information visit: armodilo.com